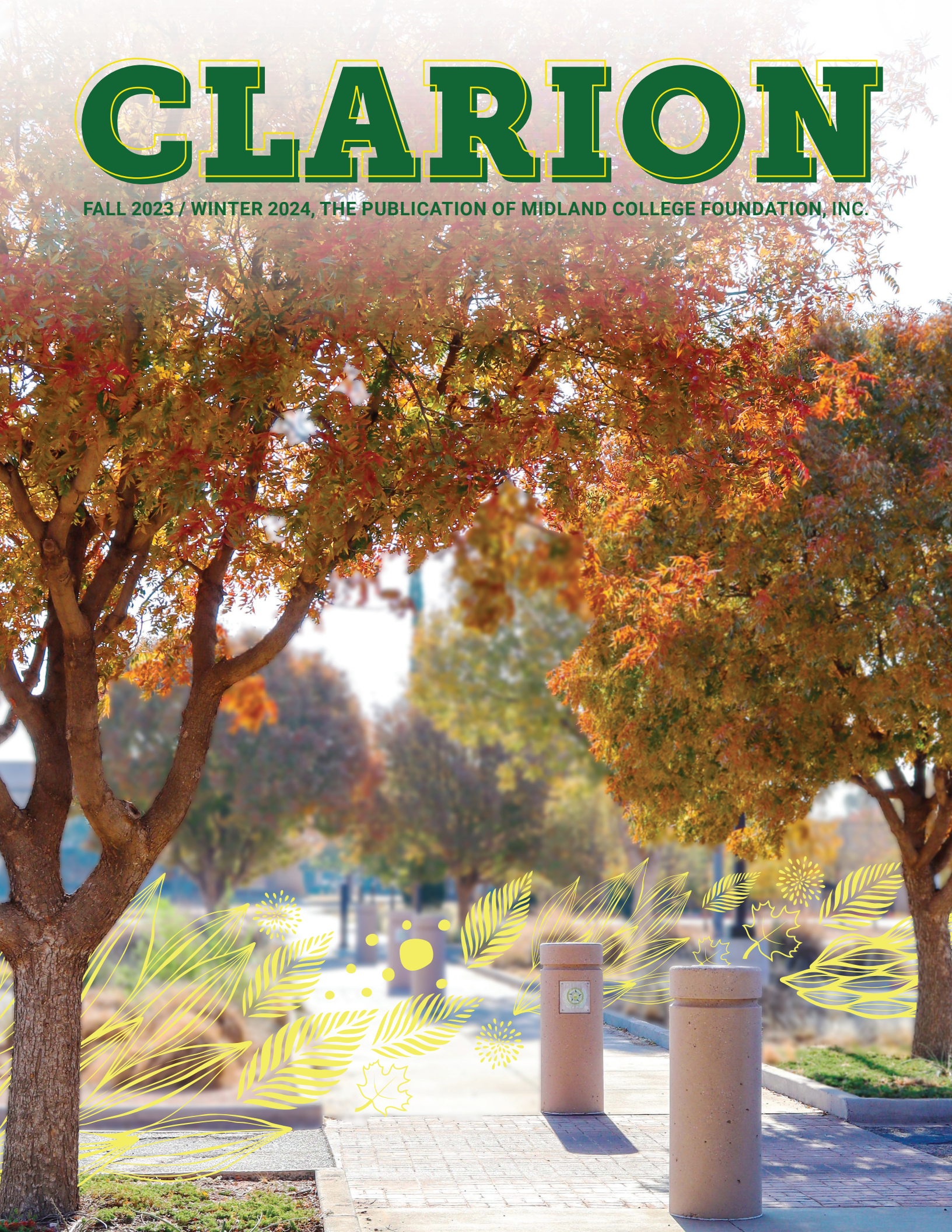


CLARION

FALL 2023 / WINTER 2024, THE PUBLICATION OF MIDLAND COLLEGE FOUNDATION, INC.





President, Midland College

Dr. Damon Kennedy

Executive Director

**Institutional Advancement &
Midland College Foundation, Inc.**

Rebecca Bell

**FOUNDATION
BOARD MEMBERS**

President

Cadell Liedtke

Vice President

Mike Oestmann

Treasurer

Richard H. Coats

Secretary

Linda J. Cowden

B. J. Beal
Jack E. Blake, Jr.
Karmen H. Bryant
Arnulfo T. Carrasco, M.D.
Joe de Compiegne
William Dings
Gary Douglas
Julie Edwards
Becky Ferguson
Damon Kennedy, Ph.D.
Scott Kidwell
Taylor Mayne
Tricia Michie
Paul Morrow
John Norwood
Albert Sherman
Chip Smith
Travis Stice
Julia Swallow
Word Wilson





FROM MIDLAND COLLEGE PRESIDENT DR. DAMON KENNEDY

Hello Friends,

It has certainly been a fun two-decade journey to the point where I am able to address you as President of Midland College.

Since coming into the position at the start of July, our college community has honed in on seven primary focus areas. We recognize **enrollment growth** is vital for the sustainability and vitality of our institution, and engaging the community is our opportunity to expand the impact of Midland College. **Student success** is at the core of our mission. We are committed to providing high-quality education that equips our students with the skills and knowledge needed to transfer or go to work. In today's rapidly evolving job market, career and technical education are more important than ever. We will strengthen our commitment to offering comprehensive **career and technical education** programs that align with industry needs. We understand that **collaboration** is key to achieving our goals. We will actively seek partnerships with local businesses, organizations and other educational institutions to enhance our offerings and create valuable opportunities for our students. **Community engagement** is a cornerstone of our institution. We will continue to actively engage with our local community through service initiatives, cultural events and outreach programs. We will invest **workplace quality** by focusing on professional development opportunities, employee wellness programs and work-life balance initiatives. In order to achieve our primary goals, we will create an environment where employees thrive personally and professionally. And finally, **stewardship** of resources is paramount. We will manage our finances responsibly and ensure that every dollar is used efficiently to benefit our students and community. Our commitment to sustainability and responsible resource management will guide our decisions and actions.

Midland, Texas stands out for its culture of giving. At Midland College, countless students have benefitted from scholarship dollars, student supports and facilities enabled by the generous contributions of individuals and businesses alike. Donors have played a pivotal role in shaping Midland College. Their dedication to supporting education has transformed countless lives and fueled the dreams of many. Such remarkable generosity is a testament to the shared belief that by investing in education, we are securing a brighter tomorrow for all in our community.

Today we are engaged in critical work and your support is greatly appreciated! There are exciting times ahead for Midland College!

Go Chaps,

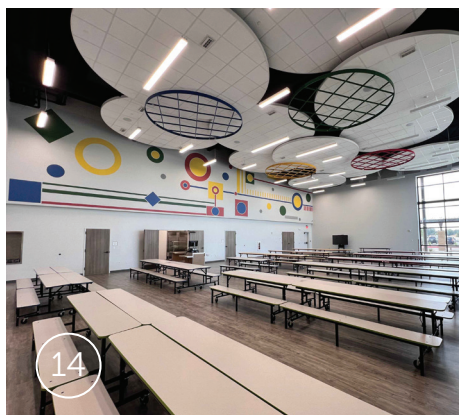
A handwritten signature in black ink that reads "Damon Kennedy". The signature is fluid and cursive.

Damon.



SEE WHAT'S INSIDE

- 4 MIDLAND COLLEGE'S 5TH PRESIDENT
- 8 WORKFORCE TRAINING
- 12 BEHAVIORAL HEALTH CENTER
- 14 CONSTRUCTION AND RENOVATION
- 20 ANIMANIACS



FALL 2023 / WINTER 2024



21	<i>FRIENDS OF THE SERIES</i>
22	UPCOMING EVENTS
26	SCHOLARSHIP REPORT
28	DONATIONS

Damon Kennedy, PH.D.,



MC President
Dr. Damon Kennedy
and wife Susanne

MIDLAND COLLEGE'S 5TH PRESIDENT



**On July 1, 2023,
Dr. Damon Kennedy
assumed the position as
President of Midland College,**

however, he is no stranger to West Texas, let alone Midland College. He was born and raised in the small West Texas town of Snyder and first stepped foot on the Midland College campus when he was 10.

"I started playing tennis in elementary school," Kennedy recalled. "I played one of my very first tennis tournaments at the Midland College tennis courts."

After graduating from Snyder High School in 1992, Kennedy returned to Midland College, this time as a college student. He completed over 30 hours at Midland College before transferring to the University of Texas Permian Basin (UTPB), where he obtained Bachelor of Arts and Master of Arts degrees in History. Kennedy earned a Ph.D. in American History from Texas Tech University. His dissertation focused on Samuel Burk Burnett and the 6666 Ranch.

He has been working at Midland College since 2003, first as an adjunct History professor while he was working as an archivist for the Petroleum Museum. In 2004, Kennedy joined the History faculty as a fulltime professor.

"I grew up in a family of educators," he said. "My father served as a teacher and elementary administrator in Snyder for 43 years. In fact, the



Dr. Damon Kennedy, September 21, 2023, building dedication for the newly renovated Jack E. Brown Conference Hall

desk I have in the Midland College President's Office was my father's desk. It has been in every office I've had at Midland College since I was dean of the Social & Behavioral Sciences and Business Division.

"My mother was also a career educator. She was a counselor and diagnostician. Now my oldest daughter Kaitlyn is carrying on that tradition. She is pursuing a graduate degree at Texas A&M University in Early Childhood Education Curriculum and Instruction with an emphasis on Literacy."

Kennedy married his high school sweetheart Susanne in 1996. In addition to their daughter Kaitlyn, they have a younger daughter Maddy



Midland ISD
Superintendent
Dr. Stephanie Howard
and Dr. Damon Kennedy,
September 12, 2023,
building dedication
and ribbon cutting for
Midland College Pre-K
Academy and Center for
Teaching Excellence.

who is also a student at Texas A&M University and will graduate in May with a degree in Society, Ethics, and Law. She plans to attend the Bush School of Government and Public Service for a certificate in Public Policy next year before attending law school.

"I love Midland," Kennedy said. "Susanne and I have lived here most of our married lives, and we raised our daughters here. They both graduated from Midland High School. When I applied for the position of Midland College president, people asked me why I wanted the position. I explained that I didn't want to be president of just any college—I wanted to be president of Midland College."

Kennedy taught History at Midland College for 10 years before being promoted to Dean of Social/Behavioral Sciences and Business. He is an award-winning professor and has been honored by Phi Theta Kappa International Honor Society as a Distinguished Administrator. He was also named a Distinguished Former Odessan by the Heritage of Odessa Foundation.

He is an advocate for the Midland community, families, students, faculty and staff. As a more than 25-year higher education professional, Dr. Kennedy has made teaching, learning and the community his primary focus. He has successfully collaborated with taxing entities, business and industry, and philanthropic partners to enable impactful work at Midland College. He is a champion of workforce development aligned with student demand and industry need and has emphasized the significance of dual credit opportunities for students throughout the Midland College service area. Kennedy is a mindful steward of public dollars as well as an accomplished fundraiser. He currently serves on the Permian Basin Workforce Development Board, the Education Partnership of the Permian Basin Leadership Team and the Midland Independent School District Bond Committee.

"My job at Midland College is not to just lead the college, but also to assist all of our partners in the community, such as Midland ISD, Midland Health, City of Midland and others," Kennedy said. "I've often told people that Midland College is the connective tissue that can help our community grow. We've recently developed a new strategic plan for the College and part of the plan is to help our partners with their priorities. Education is the vehicle to evolution of our community, and my role as the fifth president of Midland College is to lead the College so that it continues to be an integral part of what makes Midland's economy strong and quality of life great."

Before assuming the Midland College President's position, Kennedy served as Vice President of Instructional Services at MC. In this role, he led the successful launch of the Pre-K Academy at Midland College and accompanying baccalaureate degree in Early Childhood Education. The College started both of those programs as responses to significant community needs—a shortage of quality early pre-school programming and shortage of teachers. Now both of those programs have a home in the new Midland College Pre-K Academy and Center for Teaching Excellence.

Additionally, as Vice President of Instructional Services, Kennedy led the implementation of the Concho

Resources/Texas A&M University Engineering Academy and the dual credit fire academy. He also led numerous significant instructional initiatives to improve student outcomes, leading Guided Pathways, the implementation of eight-week terms and the creation of the MC Teaching and Learning Center. Kennedy has extensive experience with program and institutional accreditation, serving as a chair of regional accrediting committees for the Southern Association of Colleges and Schools, Commission on Colleges. He played a key role in the successful decennial reaffirmation of Midland College.

"Dr. Kennedy knows Midland College," Steve Kiser, chair of the Midland College Board of Trustees, said during an interview with reporter Ben Shaffer of the *Midland Reporter-Telegram*. "The first day on the job he was already making positive changes. He didn't need to ramp up and learn. We've got a lot of things on our plate right now that we just need to get right on and get after — our Career and Technical Education program and many others — and he's on board, aware and ready to go and that's going to be a great asset to us, a great advantage that he really knows where we are and where we need to be."

Now as President of Midland College, Kennedy said that he's looking forward to taking on an elevated leadership role to better the college and community at large.



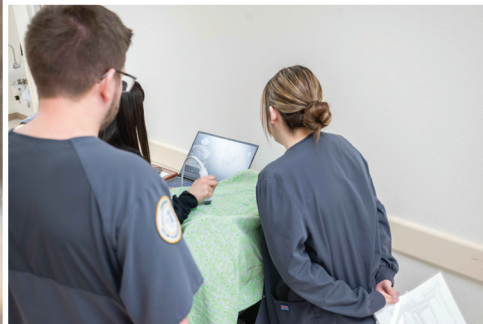
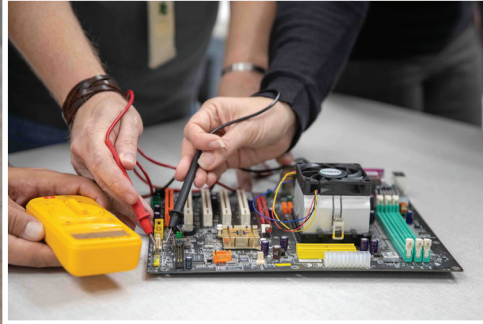
FACILITY PLANNING TO MEET REGIONAL WORKFORCE NEEDS

Recognizing the need to serve students and the West Texas community in the best ways possible, Midland College is continually looking to improve and enhance classroom and training environments. Today more than ever, MC is focused on the need for additional space for career and technology education.

"Since its inception, Midland College has worked with MISD to provide technical training in college facilities", Dr. Deana Savage, MC Chief of Staff, explained. "In 2000, Midland College partnered with the Midland Independent School District to create the Midland College Advanced Technology Center located on Cuthbert Street in Central Midland. For the past 23 years, programs at the ATC have provided hands-on training for both Midland College students and dual credit MISD students taking Career and Technical

Education courses. Now, we have outgrown the space at the ATC, and we are limited in the types of programs we can provide. In fact, about 12 years ago, we had to build a new facility for Diesel Technology that is located across the street from our Cogdell Learning Center in Southeast Midland. The Diesel Technology program has expanded even more since then and has now outgrown that space. For many of our Career and Technical programs, we could double the number of students enrolled if we just had expanded space. This is especially true in Welding Technology, Diesel Technology and Health Sciences where the demand is very high."

This fall, Midland College has embarked on two initiatives to help expand facilities in order to meet regional training needs.



The first initiative is a comprehensive audit of existing facilities that will provide a road map for future decision making. Savage said that this audit will include buildings on the main campus, as well as the Advanced Technology Center and the MC Cogdell Learning Center.

"The audit will help to address questions as to what do we have and what do we need," Savage noted. "We will then use this information to create a well-informed campus master plan."

The second initiative is to develop space for new Career and Technical Education (CTE) facilities. This will include space for traditional college CTE programs, dual credit CTE programs for Midland ISD students and space for short-term workforce continuing education and customized training. The proposed CTE complex will be

built on the north end of the MC main campus. A drainage study will also need to be conducted before construction can occur on this part of the campus.

Career and Technical Education has been steadily gaining in popularity over the past several years for good reason. Part of the popularity of CTE programs comes from their "career-friendliness." CTE courses offer students a clear career path in fields with market demand and less years of schooling than traditional four-year degrees, which often means less student debt.

"Because we have expanded our CTE programs over the past 20 years, we have had to find room at various locations on and off the main campus," Curt Pervier, MC associate vice



president of CTE Planning & Coordination, explained. "New advances in technology have spurred the need to create spaces that are more flexible in maintaining state-of-the-art equipment. This not only includes industrial training such as HVAC, automotive, welding and diesel technology, but also programs in health sciences. Just in the past five years, the MC Advanced Technology Center has seen a tremendous increase in dual credit entry-level health sciences courses. This is an area where we could probably double the number of students if we had more space.

"We continue to evaluate our CTE curriculum in order to provide training for the Permian Basin workforce. For example, we recently implemented two new certificate programs in Energy Technology—one in Lease Management and one in Automation. Both programs will require additional space to train more students on new equipment. Also, having programs at various locations throughout Midland causes some major inefficiencies, such as transportation issues for MISD dual credit students."

Pervier explained that for many years, Midland College has partnered with MISD to prepare high school students for entry-level jobs that are in high demand in the Permian Basin. High school students earn entry-level Midland College certificates and are immediately employable after high school graduation. CTE programs provide "stackable credentials." After high school graduation and entry-level certificates, students are able to continue to take advanced skills classes at MC to receive additional certificates and Associate of Applied Science degrees. After working for a few years, some students return to Midland College to pursue Bachelor of Applied Science degrees that build upon Associate of Applied Science degrees.

"With the establishment of a centralized Career and Technical Education facility, Midland College is poised to lead the charge in educational innovation," Jeff Horner, executive director of Midland ISD Career & Technical Education, said. "By consolidating programs in one location, we not only elevate education but also broaden access to CTE dual credit for more MISD



students. This approach empowers a greater number of our students to explore their passions and career aspirations in depth. This facility, more than concrete and steel, symbolizes a beacon of opportunity—a testament to the steadfast collaboration between Midland College and Midland ISD, devoted to forging brighter futures in Midland. It's a win-win scenario, showcasing Midland College's unwavering commitment to nurturing the future leaders and workforce of our community."



In addition to space for courses that lead to certificates and associate degrees, Midland College is also seeing increased demand from local businesses for customized training. This includes training on heavy industrial equipment as well as training on specific software. Pervier said that new CTE facilities on the MC campus will include flexible space to accommodate customized training needs.

Dr. Savage said that Midland College is not embarking on this new venture on its own. With partial funding provided by Scharbauer Foundation, the College has hired Facility Programming and Consulting based in San Antonio to conduct the strategic facilities audit. Additional input is being provided from the Permian Strategic Partnership, employer representatives on CTE program advisory committees and Midland ISD officials.

"We are collaborating with others who have a stake in seeing that West Texans are trained on technology and equipment for high-growth, in-demand jobs that lead to rewarding careers," Savage said. "It's all about working together to do what's best for our community."





Midland College Responds To *The Need For Mental Healthcare Workers*

By Kara Gutierrez, MC Honors Program student mentored by Ginger Schantz,
department chair, Government/Political Science

Mental health issues will no longer be pushed aside in West Texas. Through efforts at both the state and local levels, mental health is now a major focus of concern. The number of Texans reporting symptoms of anxiety or depressive disorder in 2022 comes in at 36.8 percent compared to the national number at 32.3 percent, according to KFF research.

This past May, Midlanders learned that State Rep. Tom Craddick secured \$86.7 million in funding for a 100-bed expansion of the planned Permian Basin Behavioral Health Center. This additional funding will expand the center to a 200-bed facility and will allow for \$1.75 million to be used for mental health workforce training programs at Midland College.

"Since COVID we have seen an increased awareness of mental health," Representative Craddick explained. "As a result, the Texas Legislature has an increased focus on funding these initiatives which help all Texans."

Permian Basin Behavioral Health Center developers estimate that the center will need more than 300 workers.

In a *Midland Reporter-Telegram* article, Craddick's office reported that "the funding is a big step in Rep. Craddick's initiative to ensure the workforce is trained and ready to work in the Permian Basin Behavioral Health Hospital under construction in Midland."



Midland College recently hired Stephanie Caples, a psychologist, to be the director of the new Mental Health Technician program.

"We are currently in the curriculum development stage," Caples said. "At completion, the college will offer a certificate for Behavioral Health Technician, an associate degree in Behavioral Health with a special focus on case management and, potentially, a bachelor's degree to prepare learners to become Qualified Mental Health Technicians—a state awarded certificate. Our goal is to have the certificate and at least the associate degree program ready for learners by August of 2024.

"With the new Permian Basin Behavioral Health Hospital slated to open in 2025, the workforce is needed and the timing is perfect. The community has been very supportive of this initiative.

"Training students who live and desire to work in our community is of the utmost importance to Midland College. Students who are from this community understand the character and culture of the Permian Basin. Having students trained locally will create more opportunities for these students to work in our communities and have the influence and impact for making this community healthier."

The College hopes to prepare the students for various environments of the behavioral health workforce. Students will be able to explore countless possibilities in areas across the community. Through a variety of experiences, the learners can create a healthier community. Mental health issues have been overlooked for far too long. Post COVID, public officials and society have tried to include various resources worldwide; West Texas is now a part of the effort. The main catalyst and spark that motivated this development was the necessary growth surrounding mental health in the West Texas area.

"Our communities in West Texas have a dire need for quality mental healthcare," Craddick noted. "The Behavioral Health Center is a great stride toward meeting the mental health needs of West Texas. The hospital will not only include inpatient services, but also have a crisis stabilization unit, therapeutic spaces appropriate for all ages, counseling offices, community education and residency services."





NOW OPEN

MIDLAND COLLEGE PRE-K ACADEMY
AND CENTER FOR TEACHING
EXCELLENCE



Celia and Word Wilson Playground



Linda J. Cowden and
June Cowden Commons



On Tuesday, September 12, Midland College and the community celebrated the grand opening of the new Midland College Pre-K Academy and Center for Teaching Excellence.

The new two-story, 60,000-square-foot Midland College Pre-K Academy and Center for Teaching Excellence was made possible by lead gifts of \$10 million each from Scharbauer Foundation, Inc. and the Permian Strategic Partnership (PSP). In addition Abell-Hanger Foundation, Henry Foundation, Midland College Foundation, Inc., The Beal Foundation and Warren Charitable Foundation supported the project through gifts of \$1 million or more each. Other generous contributions toward this \$32 million building were given by many other private foundations, individuals, families and businesses in the community.

"The Midland College Pre-K Academy partnership between Midland College and Midland ISD allows us to merge our resources and build upon a pillar of our strategic plan to enhance the student experience by creating a unique learning environment that will set a new standard for early education in our region," Dr. Stephanie Howard, MISD superintendent, said. "We are excited for the Academy to be able to offer five 3-year-old classes this year for a total of 85 seats and five 4-year-old classes for a total of 100 seats. This increase of 51 and 66 seats respectively from last year will allow us to serve even more of Midland's youngest learners. Currently, we are only able to serve 5% of eligible 3-year-old students in Midland, and we look forward to the future when even more seats are made available."



Rosalind Redfern Grover
Reading Room

The first floor of the Midland College Pre-K Academy and Center for Teaching Excellence includes classrooms, cafeteria and other areas for preschool students, and the second floor contains classrooms and offices for the College's Bachelor of Applied Science in Early Childhood Education and Associate of Arts in Teaching programs. Building designer is Parkhill, and Adolfson & Peterson Construction handled all construction services.

"We consider it a privilege to partner with other Permian Basin organizations to help find a solution to the shortage of high-quality early childhood education and the shortage of teachers," Dr. Damon Kennedy, Midland College President, said.

In addition to receiving hands-on learning experiences in the pre-kindergarten classrooms, Midland College students who complete the baccalaureate-level program in Early Childhood Education.

"Two important aspects of our mission as a community college are to improve quality of life in our community and prepare individuals for satisfying careers that meet the region's workforce needs," Dr. Kennedy noted. "This partnership will help Midland College fulfill that mission."



*Thank
You*

TO THE FOLLOWING
DONORS WHO MADE
THIS COMMUNITY PROJECT POSSIBLE

SCHARBAUER
FOUNDATION



STRATEGIC PARTNERSHIP



Abell-Hanger Foundation
Anonymous
Henry Foundation
Midland College Foundation, Inc.
The Beal Foundation
Warren Charitable Foundation

Robbie Windham Davidson Estate
L. Decker Dawson Trust
Rosalind Redfern Grover
Alma Walsh Mallison Estate
Celia & Word Wilson

Cliffy & B. J. Beal
Mary & Jack E. Blake, Jr.
Sigrid & Richard Coats
June Cowden
Linda J. Cowden

The de Compiegne-Wallace
Foundation
Mindy & Joe de Compiegne
Amy & Tim Leach

Karmen & Billy Bryant
Julie Edwards
Helen Greathouse Charitable Trust
Jeannie & Taylor Mayne
Tricia & Earl Michie
Katy & Paul Morrow

Morrow Family Capital Investments, LP
D'Ann & John Norwood
Shelley & Chip Smith
Sandra H. Staley
The Wayne and Jo Ann Moore
Charitable Foundation

Teresa & Mark Alexander
James M. Alsup
Ernest Angelo, Jr.
Anonymous
Patricia Bane
Ruth S. Bell
Carol Jo Blake
Spencer Blocker
Frances & Jack Brown
Fund, Communities
Foundation of Texas
Laura & Jim Brown
Dr. Arnulfo T. Carrasco
Mary Lou Cassidy
Kay & Steve Castle
Nancy Cooper
Cheryl Shull Cotner

Betty Couch
Peggy Cowan
Kaye & Holt Cowden
John and Maurine Cox
Foundation
Mary Dawson
Paula & Gary Douglas
Judia L. Foreman
Veronica & Kirk Fritschen
Marianne Green
Nancy & David Holland
Jeanie & Tom Johnson
Mary B. Kennedy
Dana & Steve Kiser
Ruth Locklar
Donette Marble
Marshall & Winston, Inc.

Charlene & Dan McBride
Dee & Paul Morris
Joseph O'Neill III
PEO Chapter DD
Randee & Jack Rathbone
Douglas Scharbauer
Kelli & Albert Sherman
Martha & John Smart
Kim & Billy Sneed
Julia & Jack Swallow
Nicholas C. Taylor
Vicki & Dr. Steve Thomas
Carole V. Warren
Molly & Tom Williams

Karen & Spencer Beal
Rebecca Bell
Shawna & Dan Buckley
Elaine & Adrian Carrasco
Audrey & Michel Curry
Becky & Doug Ferguson
Jill & Gregg Groves
Valerie & Alan Hale
Jean Jones
Elizabeth & Mary Kallus
Duncan Kennedy
Marion & John Kimberly
Barbara & Jim Leeton

Pam & Bob Leibrock
Anne McLaughlin
Susan & Rick Moore
James Moring
Roy Nelson
Sherry & Mark Nichols
Nan Oestmann
Laura & Brian O'Toole
Alison & Bruce Peeler
Katherine Prementine
Ruth A. Price
Margaret J. Purvis
Doris Redfern

A. W. Rutter, Jr.
Karen & David Schmidt
Nanette & Dennis Sever
Charles J. Siegel
Violet & Mark Singh
Kay & George Smith
Dale & Jon Stasney
Monte & Bill Stovall
Ronald Thomas
Fred Walsh
Robert K. Whitt
Melinda Williamson
John M. Wojtkun

Rita Brady
Joan & Paul Brooks
Sylvia Brown
Em Carnett
Barbara Clarke
Jaclyn Comola
Brenda Cordero
Rita Nell Diffie
Bahola & Tim Edwards
Dr. William Feeler
Kay Floyd
Esta & Cary Geron

Anne & Brian Gilley
Dr. Terry & Bruce Gilmour
Stacey & Parker Hewitt
Jan Johnston
April & Gary Kennedy
Mary Lopez
Cindy Madewell
Michael Makowsky
Ginger McCready
Vickie Pickett
Dr. Miranda Poage
Betty Ann Prentice

Ema Rivera
Aggie & Jere Romine
Dr. Deana Savage & Glenn Brown
Leslie Shoemaker
Taylor Shorb
Jeffrey A. Smith
Julia & Eric Vickery
Dr. Margaret & Burgess Wade
Dale Westfall
Jane Wolf
Elizabeth & Blas Zenteno
Kathryn Zimmerhanzel

ANIMANIACS IN CONCERT

On Saturday, September 9, the Fall 2023 installment of the Phyllis and Bob Cowan Performing Arts Series Featured *Animaniacs: In Concert!*

The live performance starred the show's original emmy-winning composer Randy Rogel and voice talent of Emmy winner Rob Paulsen. The duo performed world-famous songs from the beloved cartoon TV series (backed by video projections from the equally world-famous animations).

Prior to the performance, Midland College Distinguished Donors and *Friends Of The Series* were guests at a reception sponsored by CMC Business Systems.



Randy Rogel (piano) and Rob Paulsen entertained at Chap Center during the Phyllis and Bob Cowan Performing Arts Series presentation of *Animaniacs in Concert!*



Reception guests from left to right
Bruce Gilmour, Dr. Terry Gilmour,
Dr. Margaret Wade and Burgess Wade



Ann Hicks and Bill Rutter at donor
reception



MC President Dr. Damon Kennedy
visits with reception guests

MIDLAND COLLEGE

FRIENDS OF THE SERIES

AS OF 9/12/2023

Many thanks to the following people for giving a gift of \$1,000 or more in 2023 to help sustain Midland College's performing arts and lecture series.

2W Whatley Ranch
Teresa & Mark Alexander
James M. Alsup
Mary Beth Anton & Jeff Hewett
Dottie Barker
Jann & Dr. Vincent Bash
Cliffy & B.J. Beal
Karen & Spencer Beal
Nancy & Barry Beal
Gretchen Bell
Ruth S. Bell
Sherry & Phillip Bell
Kay Bird
Kay & Don Bishop
Mary & Jack E. Blake, Jr.
Spencer Blocker
Emily & Kevin Blonkvist
Robbie & Danny Campbell
Dr. Arnulfo Carrasco
Elaine & Adrian Carrasco
Drs. Roberta & Richard Case
Kay & Steve Castle
CMC Business Systems
Sigrid & Richard Coats
Joy & Steve Cobb
Carol & George Cockerham
Suzanna & Matt Cooper
Cheryl Shull Cotner
Peggy Cowan
June Cowden
Linda J. Cowden
Judith Craig
Diane & Jose Cuevas
Kristi & Dr. Richard Culbert
Audrey & Michel Curry
Betty Rae & Paul Davis
James M. Davis, Jr.
Mary Dawson
Mary de Compiegne
Mindy & Joe de Compiegne
Mary Anne & Bill Dingus
Paula & Gary Douglas
Arthur Dragisic
Julie Edwards
Becky & Doug Ferguson
Judia L. Foreman
Nancy Gibson

Dr. Terry & Bruce Gilmour
Barbra & Trey Grafa
Susan & Bill Granberry
Rosalind Redfern Grover
Dr. Michele Harmon & Joe Cobb
Jennifer & Dan Hart
Allen G. Harvey
Paula Henry
Patty & Tevis Herd
Carole & Harry Hinkle
Kris & Bob Hodge
Sarah & Ron Holcomb
Jenifer & Patrick Holvea
Nancy Hull
Vicki & Clint Hurt
Sandra & Dr. James Huston
Cressinda & Blue Hyatt
Leon Jeffcoat
Ann & Ted Johnson
Jeanie & Tom Johnson
Jumburrito
Marion & John Kimberly
Susanne & Dr. Damon Kennedy
Dana & Steve Kiser
Jeannie & Randy Lalk
Donna & Robert Landreth
Amy & Tim Leach
Barbara & Jim Leeton
Joe Liberty
Marion & Cadell Liedtke
Hillary & Ryan Lovell
Patti & Rod MacDonald
Donette Marble
Jeannie & Taylor Mayne
Rita & Jeff McDonald
Norma J. McGrew
Tricia & Earl Michie
Beth McKay Mitchell
Dee & Paul Morris
Katy & Paul Morrow
Elloui & Louis Moseley
Kaye & Bill Musar
Chris & Fred Newman
Susan & John Nichols
D'Ann & John Norwood
Cathy & Mike Oestmann
Ann Parish

Alison & Bruce Peeler
Premier Energy Services
Betty Ann Prentice
Margaret Purvis
Mitzi & J.R. Purvis
Diana & John Ramos
Randee & Jack Rathbone
Dr. Debbie Reese
Kathy & Brian Reid
Juandelle Lacy Roberts
Hon. Leah & Stephen Robertson
Dr. Glenn Rogers
Michele & Hon. David Rogers
Bill Rutter
Mandy Salgado
Lisa & Lourcey Sams
Dr. Deana Savage & Glenn Brown
Clarence Scharbauer III
Douglas Scharbauer
Kelli & Albert Sherman
Claudette & Dr. Tulsi Singh
Sally & Buddy Sipes
Martha & John Smart
Kay & George Smith
Shelley & Chip Smith
Suzanne Smith
Lynda & Scott Spinks
Sandra Staley
Dale & Jon Stasney
Linda & Autry Stephens
Natalie & Scott Stephens
Holly & David Stroman
Julia & Jack Swallow
Betty & Don Tomlin
Triple H Resources, Inc.
United Way of Midland
Dr. Margaret & Burgess Wade
Lissa Noël Wagner
Dale Westfall
Audrey & J.B. Whatley
Molly & Tom Williams
Modesta Williams
Claire & Jim Woodcock
Rosemary & Max Wright
Becky Yarborough

AMOS LEE

PERFORMS WITH THE WEST TEXAS SYMPHONY

Saturday, March 23, 2024 • 7:30 pm

Midland College

Al G. Langford Chaparral Center



The Phyllis and Bob Cowan Performing Arts Series presents Amos Lee as he performs with the West Texas Symphony. The event is FREE! Tickets are not required for General Admission seating. Performance begins at 7:30 pm; doors open at 6:30 pm.

An American singer-songwriter, Amos Lee's musical style encompasses folk, rock and soul. He was born in Philadelphia and graduated from the University of South Carolina with a degree in English. After working as a schoolteacher and bartender, he began pursuing a career in music. Since that time, Lee has recorded eight albums and has toured as an opening act for Norah Jones, Bob Dylan, Elvis Costello, Paul Simon, Merle Haggard, Van Morrison, John Prine, Dave Matthews Band, Adele, the Zac Brown Band, Jack Johnson, The Avett Brothers and David Gray. His music has appeared on the soundtracks of numerous TV shows and movies. He has also performed as a featured artist on the PBS series *Bluegrass Underground*.

With one foot in the real world and the other in a charmed dimension of his own making, Amos Lee creates the rare kind of music that's emotionally raw, yet touched with a certain magical quality. On his eighth and most recent album *Dreamland*, Lee intimately documents his real-world struggles (alienation, anxiety, loneliness, despair), an outpouring born from deliberate and often painful self-examination.

"For most of my life I've walked into rooms thinking, 'I don't belong here,'" Lee said. "I've come to the realization that I'm too comfortable as an isolated person, and I want to reach out more. This record came from questioning my connections to other people, to myself, to my past and to the future."



Amos Lee performs on
March 23, 2024



Candice Millard speaks
on April 11, 2024

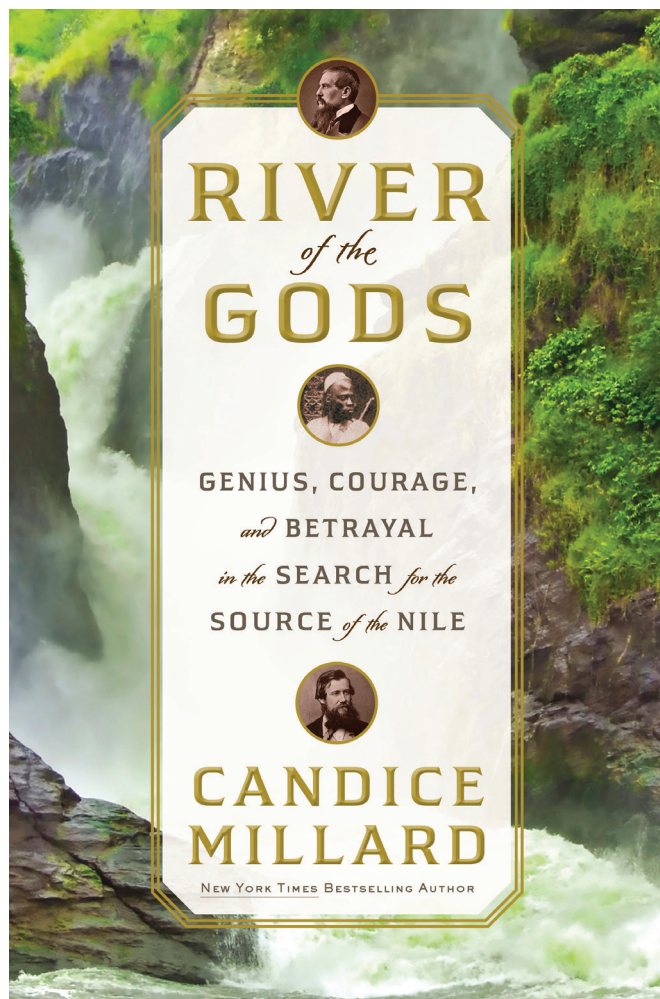
AN EVENING WITH

CANDICE MILLARD

Thursday, April 11, 2024 - 7:00 - 8:00 pm

Midland College

Al G. Langford Chaparral Center



The Davidson Distinguished Lecture Series presents "An Evening with Candice Millard," author of the *New York Times* bestsellers *The River of Doubt*, *Destiny of the Republic*, *Hero of the Empire* and *River of the Gods*. Her book *Hero of the Empire* was named Amazon's number one history book of 2016. Millard lives in Kansas City with her husband and three children.

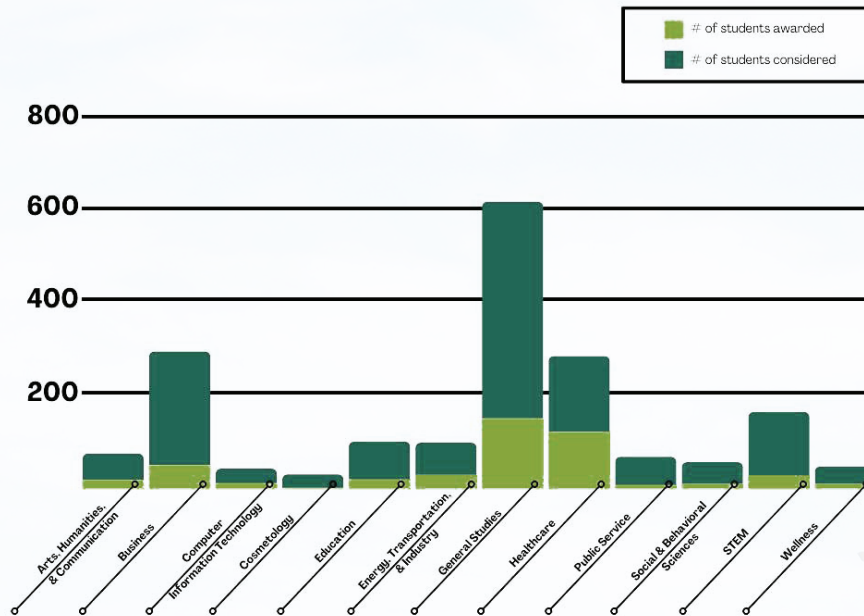
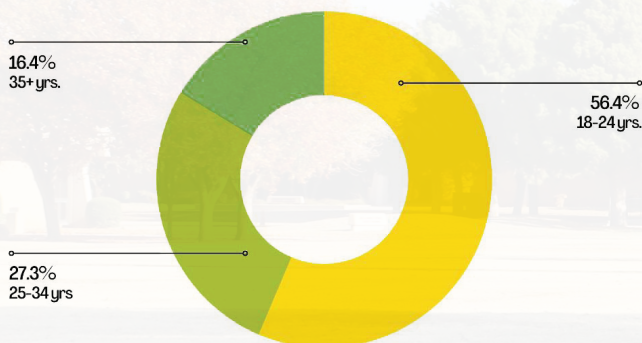
This event is FREE; tickets are not required for General Admission seating. Preferred seating is available for Midland College *Friends of the Series* and Distinguished Donors. Contact the Midland College Foundation, foundation@midland.edu, (432) 685-4526 for information about these opportunities.

MIDLAND COLLEGE **SCHOLARSHIPS** FALL 2023 SEMESTER

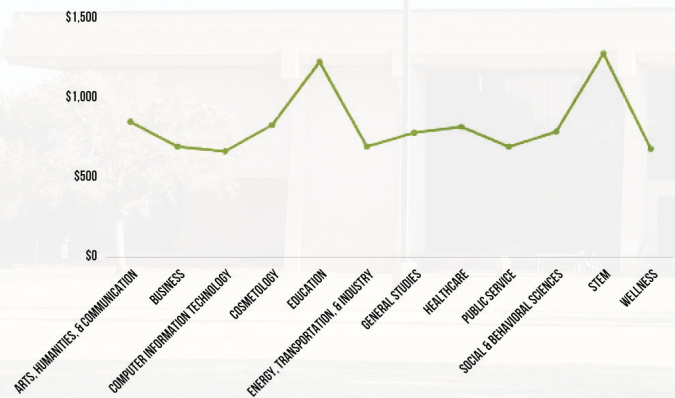
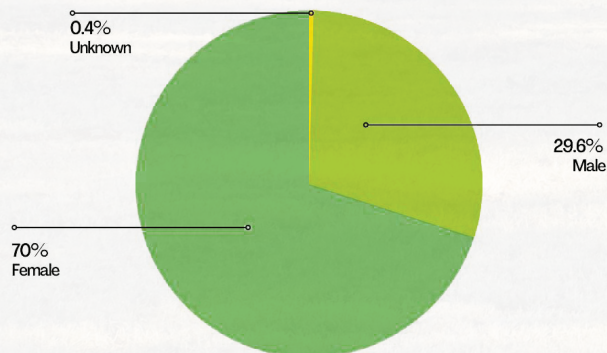
By Meredith Walker, Midland College Associate Director, Scholarships

During the Fall 2023 semester, thanks to the generosity of scholarship donors, 612 Midland College students received scholarships totaling \$403,905. On average, Midland College awards each scholarship recipient approximately \$800 toward covering the costs of tuition, fees, books, supplies and in some cases room and board.

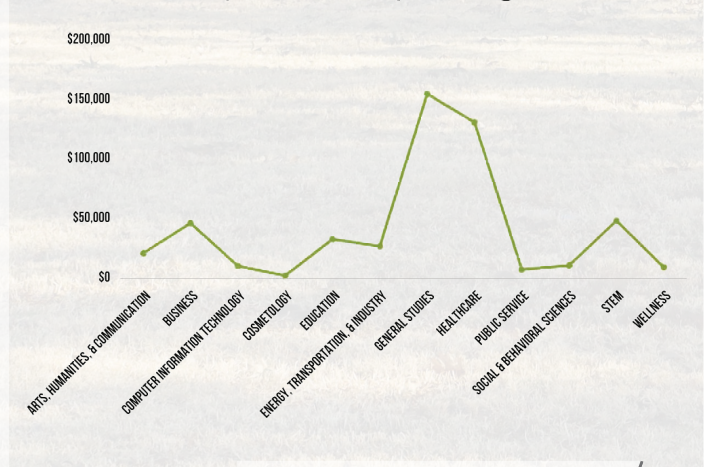
Awarded vs. Considered Fall 2023

Age Demographics of Scholarship Recipients
Fall 2023

Average Award per Student Fall 2023

Gender Demographics of Scholarship Recipients
Fall 2023

Total Scholarships Awarded per Program Fall 2023



SCHOLARSHIP DONATIONS

May 5-September 10, 2023



Many thanks to donors who generously support Midland College and invest in Midland College students through donations to scholarships.

Midland College Foundation is proud to announce its newest scholarship —The Sandra H. Staley Education Scholarship, which will be awarded to students enrolled in Midland College's Bachelor of Applied Science program in Early Childhood Education.

ALINE COLLINS ENDOWED SCHOLARSHIP
Betsy Haney

ALUMNI ASSOCIATION SCHOLARSHIP
Alumni Leadership Council
Lauren Callo
Alvin Carter
Ida Curiel
Jean Jones
Mary Lopez
MC Alumni Network
Joanne Thames

APPLIED TECHNOLOGY SCHOLARSHIP
Lyndolyn & Curt Pervier

CAROLYN B. KIRSCH ENDOWED SCHOLARSHIP
Sue & Dennis Kirsch

CLARA KING ACCOUNTING SCHOLARSHIP
Dale Westfall

DARA PERRY BUSH RN NURSING SCHOLARSHIP
Wayne & JoAnn Moore Charitable Foundation

DOCTORS' DAY SCHOLARSHIP
Dottie Barker
Kim & Dr. Rabon Bewley
Gire & Dr. Michael Dragun

DR. EILEEN PIWETZ SCHOLARSHIP
Wincy Hursh
In Honor of
Dr. Eileen Piwetz

EARLY COLLEGE HIGH SCHOOL PROGRAM (ECHS)
Frances & Jack Brown Fund,
Communities Foundation of Texas
Scharbauer Foundation, Inc.
Melissa & Chris Stevens
Wayne & JoAnn Moore Charitable Foundation

David M. Williams
In Honor of
Alan Gilbert

FASKEN FOUNDATION SCHOLARSHIPS
The Fasken Foundation

FRANCES BROWN ENDOWED SCHOLARSHIP
Frances & Jack Brown Fund,
Communities Foundation of Texas

GENERAL NURSING SCHOLARSHIP
Donna & Ted Ferguson

GENERAL SCHOLARSHIP FUND
Lillian Adair
Alice Armstrong
Barbara & Jack Cartwright
Ruth Locklar
McGary Regan Foundation
Midland West Rotary Club
Chris & Fred Newman
Permian Basin Association of
Pipeliners (PBAP)
Suzanne Ready
Marian Rye

Ernest Angelo
In Memory of
Carol Jo Blake

Rachel & Shawn Baker
In Memory of
Dan Ledbetter

GLEN RICHARDSON MEMORIAL SCHOLARSHIP
Joy & John Anderson

Becky & Dennis Duncan
In Memory of
Mary Richardson

Jo Kelleher
In Memory of
Mary Richardson

IME-BECAS
Consulado de Mexico

JAMES BRADFORD MEMORIAL SCHOLARSHIP
Dr. Terry & Bruce Gilmour

JERRY MILLS FACULTY DEVELOPMENT FUND
Dr. Terry & Bruce Gilmour

Dr. Terry & Bruce Gilmour
In Honor of
Dr. Steve Thomas

LEGACY SCHOLARSHIP
Abell-Hanger Foundation
Chaparral Foundation
Scharbauer Foundation, Inc.

LIFT HIGH FOUNDATION SCHOLARSHIP
Lift High Foundation

LOUAN & GLENN ROGERS ENDOWED SCHOLARSHIP
Michele & Hon. David Rogers
In Memory of
Louann Rogers

MARIE HINKLE SCHOLARSHIP
Twentieth Century Study Club-TFWC

MARY RUTH THOMAS ENDOWED SCHOLARSHIP
In Honor of
Dr. Steve Thomas
Rebecca Bell
Lori & Dr. William Feeler
Permian Basin Area Foundation
Violet & Mark Singh

MAXIMO "MAX" CUELLAR SCHOLARSHIP
Hispanic Cultural Center of Midland

NORTHSIDE LIONS CLUB OF MIDLAND ENDOWED SCHOLARSHIP
Midland Northside Lions Club

NORTHSIDE LIONS CLUB OF MIDLAND SCHOLARSHIP
Midland Northside Lions Club

PEO MEMORIAL SCHOLARSHIP
Freda Benton

PEO Chapter DD
In Memory of
Amy Evans

PPDC PIPELINERS SCHOLARSHIP
Permian Basin Association of
Pipeliners (PBAP)

SCHOLARS' DOLLARS PROGRAM

Dr. Joe Blumentritt
 Sandra & Dennis Braden
 Chevron Products Company
 First National Bank
 Fort Stockton Rotary Club
 Joe's Place, LLC
 Kessia Ledesma Insurance
 Georgia & Bentley King
 Elizabeth & Larry Lara
 Linebarger Goggan Blair & Sampson, LLP
 McGary Regan Foundation
 Panther Pictures
 Pecos County State Bank
 Salvador Salazar, Jr.
 Linda & Hon. Joe Shuster
 Simply Loved Consignment LLC
 Joshua Spigener
 Stockton Pharmacy
 Dulcia Warren
 Wayne & JoAnn Moore Charitable
 Foundation
 WRTTC Alumni Association

Kathy & Cecil George
*In Memory of
 Jo Siegmund*

Andres Madrid
*In Memory of
 Ida Casias*

**SERGEANT MIKE NAYLOR CRIMINAL
 JUSTICE ENDOWED SCHOLARSHIP**
 Crime Stoppers of Midland, Inc.

TOM CLOYD MEMORIAL SCHOLARSHIP
 Margaret Cloyd

VETERANS & DEPENDENTS SCHOLARSHIP
 Susanne & Dr. Damon Kennedy
 Midland Colony Magna Charta
 Dames & Barons

YOUNG PROFESSIONALS IN ENERGY
 Young Professionals in Energy



DONATIONS

MAY 5 - SEPTEMBER 10, 2023

ATHLETIC ENDOWMENT FUND

Dr. Terry & Bruce Gilmour

BEDC GIFTS & DONATIONS

Wells Fargo Foundation

CHAPARRAL CIRCLE ENDOWMENT FUND

Janet & Rick Bender

Mary Anne & Bill Dingus

Jan Johnston

In Memory of

Javier Delucas Gutierrez

Josh Knight

In Memory of

Javier Delucas Gutierrez

Ema Rivera

In Memory of

Javier Delucas Gutierrez

Vicki & Dr. Steve Thomas

In Memory of

Javier Delucas Gutierrez

CORAL REEF RESEARCH

The Yarborough Foundation

COURT OF HONOR

Dr. Joe Blumentritt

In Memory of

Mary & Glen Richarson

ENVIRONMENTAL REGULATORY SEMINAR

International Association of Drilling Contractors (IDAC)

Schlumberger

GOLF PROGRAM

Carol & Walt Williams

HEALTH SCIENCES TESTING & SUPPLIES

Sara & Dr. Norman Fry

In Honor of

Terry Tubb

KIDS' COLLEGE

Abell-Hanger Foundation

James A. "Buddy" Davidson

Charitable Foundation

NON-CASH GIFT DONATIONS

Midland County Sheriff Department

Sunbelt Rentals Oil & Gas Services

PETROLEUM CONFERENCE CENTER

Dr. Michael Dixon

PETROLEUM PROFESSIONAL DEVELOPMENT CENTER SPONSORS

Foundation Energy Services

Nova Mud, Inc.

Precision NDT, LLC

Schlumberger

PRE-K ACADEMY BUILDING CAMPAIGN

Permian Strategic Partnership

The de Compiegne-Wallace

Foundation

Celia & Word Wilson

Rebecca Bell

In Memory of

Shirley Goodrum

Rita Brady

In Memory of

Shirley Goodrum

Susanne & Dr. Damon Kennedy

In Memory of

Shirley Goodrum

Vicki & Dr. Steve Thomas

In Memory of

Shirley Goodrum



PRE-K ACADEMY EQUIPMENT & SUPPLIES

Anonymous

PRESIDENTIAL RETIREMENT GIFT

Cliffy & B.J. Beal
Karmen & Billy Bryant
Elaine & Adrian Carrasco
Dr. Arnulfo T. Carrasco
Kay & Steve Castle
Sigrid & Richard Coats
Conoco Phillips
Linda J. Cowden
Mindy & Joe de Compiegne
Paula & Gary Douglas
Julie Edwards
Becky & Doug Ferguson
Paula & Jim Henry
Scott Kidwell
Dana & Steve Kiser
Pat & Larry Lawrence
Lynch, Chappell, & Alsup PC
Charlene & Dan McBride
Tricia & Earl Michie
Dee & Paul Morris
D'Ann & John Norwood
Cathy & Mike Oestmann
Shelley & Chip Smith
Brenda & Travis Stice
Celia & Word Wilson

RECEPTION DONORS

CMC Business Systems
Community National Bank



SUPPORT OUR STUDENTS (SOS)

Forrest Allen
Joseph Bontke
Rita Brady
Sylvia Cevallos
Kodi & Dr. Michael Dixon
Adelle Dowling
David Edens
Barbara & Keigm Fennell
Joseph Fields
Laurie Fitzgerald
Dr. Terry Gilmour
Jennifer Goolsby
Betsy Haney
Sarah Hildebrand
Jean Jones
Susanne & Dr. Damon Kennedy
Leonora Lambert
Adriana Lumpkin
Jeff McDonald
Dr. Sondra Richards
Sylvia Salinas
Josefina Samaguey
Raquel Segovia
Stephanie Shelton
Shawn Shreves
Lori Smith
Lori Thomas
Sheena Thompson
Dr. Mary Williams
Dr. Kathryn Zimmerhanzel

Ernest Angelo
*In Memory of
David Grimes*



Marilyn Harrison
*In Memory of
Patsy Yeager Hinchey
Sarah & David Grimes
Martha Kallus
Robert Halvorsen
Arlen Edgar
Patricia Fisch
Christopher Suiter
Shirley Ireland
Fred Thummel
Connie DeMasi
Charlyne Dodge
Hal Brenner*

Vicki & Dr. Steve Thomas
*In Memory of
Robbyne Fuller*

SPECIAL EVENTS

Frances & Jack Brown Fund,
Communities Foundation of Texas

LEAVE AN ENDURING LEGACY.

IMPACT THE LIVES THAT FOLLOW



**LEARN HOW YOU
CAN GIVE THE GIFT
OF EDUCATION**

FOR MORE INFORMATION CONTACT
Rebecca Bell, Executive Director
Midland College Foundation
432.685.4556 | rbell@midland.edu



MIDLAND COLLEGE FOUNDATION, INC.

3600 N. Garfield Street
Midland, TX 79705

NON-PROFIT
ORGANIZATION
PAID
MIDLAND, TX
PERMIT NO. 10

#StartStriveSucceed

MIDLAND.EDU

